

TOPO!® *Xport Pro*

*Easily add National Geographic TOPO!
maps to any CAD, cartographic, or GIS project*



Includes:

National Geographic's
award-winning
TOPO! software

100k topographic map
data for the entire USA

Updated GDT streets
and roads

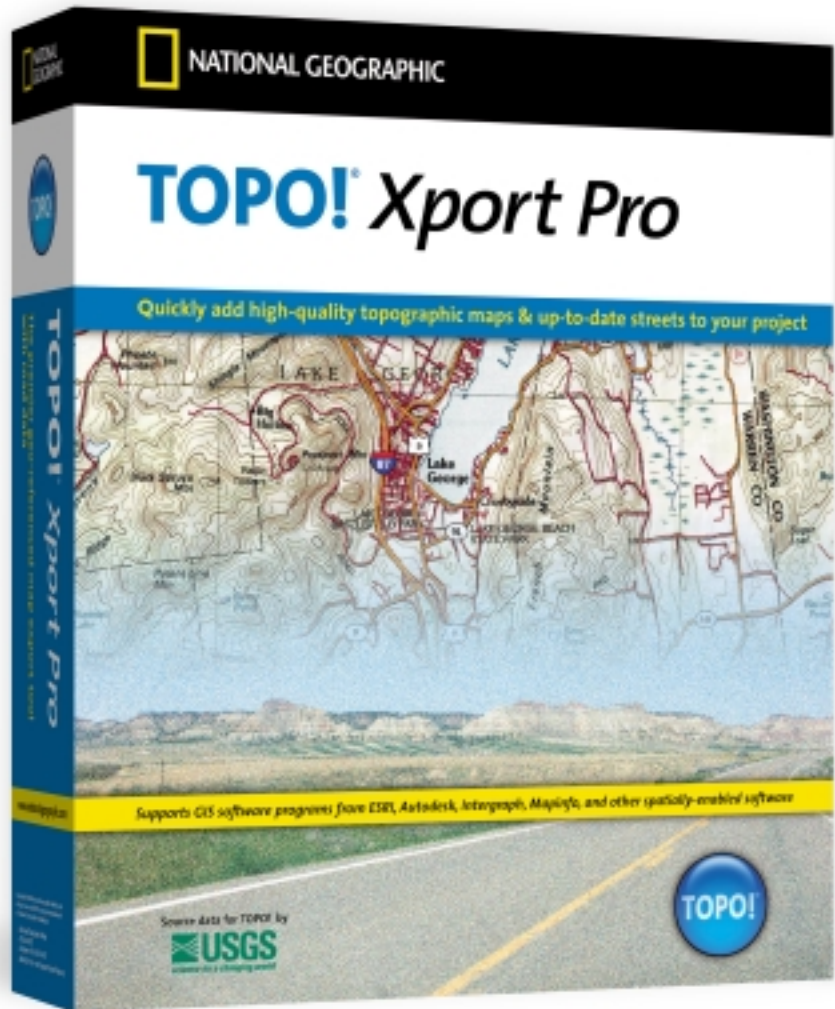
Live Update feature to
download the latest
map updates

**For only
\$199**

www.nationalgeographic.com/topo

to order
800-962-1643

for quotes and pre-sale support
800-962-1643 ext.101



National Geographic *TOPO! Xport Pro* is a one-stop, cost-effective solution for professionals to design and add the highest-quality topographic maps updated with current streets and roads to any CAD, GIS, cartographic, 3-D modeling, and GPS project that supports TIFF files.

TOPO! Xport Pro enables you to quickly add dimension to your project with detailed, seamless,

georeferenced topographic maps. National Geographic topographic data comes directly from the USGS 7.5 series. Each quad has been individually scanned at a high resolution (millions of colors), enhanced with hillshading, and optimized for quick viewing and printing. Maps created with *TOPO! Xport Pro* improve the visual appearance of your presentation.

TOPO! Xport Pro

Full Export Utility, Feature Set, and Functionality

National Geographic TOPO! Xport Pro gives you added export functionality, so that you can use the highest-quality, seamless topographic maps in your project. Select the exact area you need and quickly export a single seamless raster map image.

TOPO! Xport Pro comes with many additional robust features to enhance your maps.

- Highest-quality topographic maps using the most current USGS data
- Toggle between NAD27 and WGS84 datums in lat/long and UTM
- Toggle on shaded relief to view the lay of the land, or turn it off to view the original USGS maps
- Draw custom routes and TOPO! displays the distance, creates an elevation profile, and prepares it to upload to a GPS
- Add photos, notes, and web links to your maps
- Get GPS waypoints for any point on the maps
- Import GPS waypoints; store and organize them in the easy-to-use database
- Choose from a wide range of symbols to insert on your map

Live Update

Live Update will alert you when the latest updates to USGS quads and GDT street data are available. You can then download them to your hard drive so you always have the most up-to-date data.

Export file formats

Raster maps exported from TOPO! are in the GeoTIFF format. GeoTIFF is the accepted interchange format for georeferenced raster imagery, supported by all major GIS, cartographic, and CAD applications. These rasters can be

Below: TOPO! 100k topographic map with GDT road data in magnified view



Above: TOPO! 100k topographic map with GDT road data

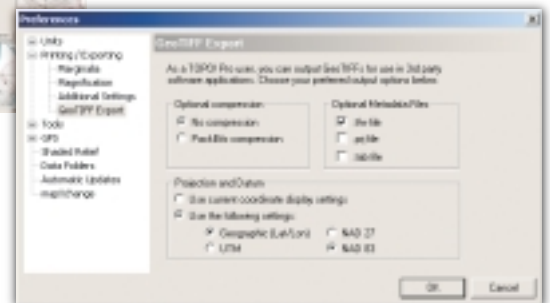
referenced to either latitude/longitude or UTM map projections, in either the Nad83/WGS84 or NAD27 map datum.

Five map layers: Complete state to US coverage

TOPO! Xport Pro includes five layers of maps: National data sets include two National Geographic Atlas layers, USGS 1:500,000-scale regional maps, and a full set of 1:100,000-scale topographic maps for the entire United States. To complete your map set, your purchase includes the 1:24,000-scale State Data set of your choice.

Updated streets & roads from GDT

In addition to the five map data sets, TOPO! Xport Pro also includes the latest streets and roads from GDT! You can toggle the roads on and off, query any road, and add street and road names with a single click.



Above: TOPO! Xport Pro geo-referenced tif export options

Only \$199

For just \$199, you will get the complete TOPO! Xport Pro package, including National Geographic TOPO! software and export utility, the TOPO! U.S. 100k data set enhanced with GDT's most up-to-date streets, and a free State data set of your choice — giving you the power to design and export the highest-quality topographic maps and up-to-date streets into your next project