



One Click provides:

Actual 1:24000 scale
USGS "quad" maps



Seamless 30m USGS
Digital Elevation Models



TOPO! 30m hillshade

**TOPO! is the premier
topographic data for the
ESRI Geography Network**

to order or learn more

800•962•1643

www.nationalgeographic.com/topo

Data sold separately by state

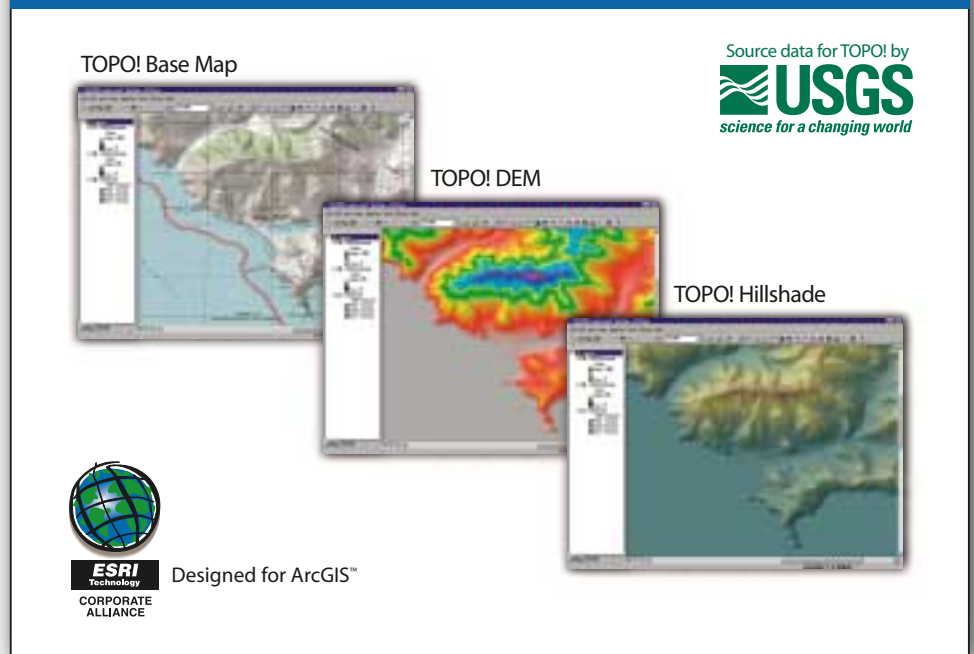
National Geographic TOPO!® for ArcGIS™

Enhance your GIS project with National Geographic's award-winning TOPO! maps, hillshade, and Digital Elevation Models



TOPO!® for ArcGIS™ *Multi-layer edition*

*The Fastest, Most Accurate Way to Add TOPO! Base Maps,
DEMs and Hillshades to Your Projects*



TOPO! Base Map

TOPO! DEM

TOPO! Hillshade

Source data for TOPO! by
USGS
science for a changing world

ESRI
Technology
CORPORATE
ALLIANCE

Designed for ArcGIS™

TOPO! for ArcGIS is the only topographic map solution that integrates directly with ArcGIS. This extension adds a toolbar to ArcMap that directly accesses raster maps and data from the National Geographic TOPO! State CD-ROMs (sold separately). The toolbar also makes it easy to locate and manage maps and data in your project. With one click, you can select the maps and layer(s) you want and import them into your project as georeferenced data. Layers can be

toggled on and off, and transparencies, color ramps, and visible scale ranges can be adjusted separately. Small file sizes make using TOPO! for ArcGIS fast and easy to use!

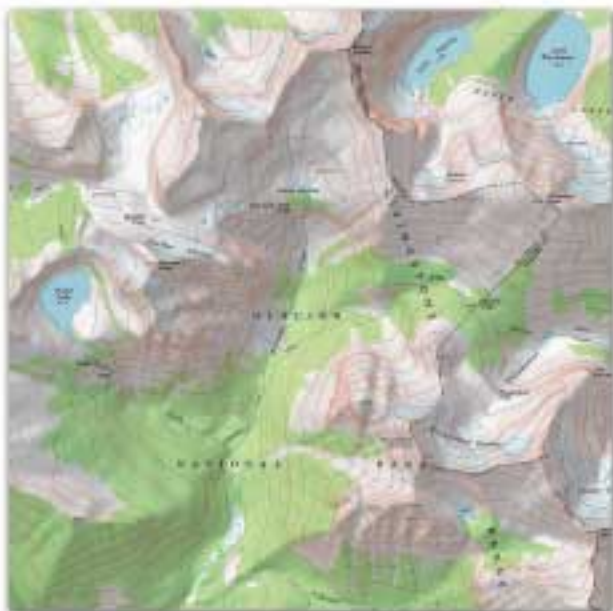
Designed for ArcGIS, TOPO! for ArcGIS gives you professional-level graphics, using next-generation DEM and topographic hillshade data. It's all you need to ensure that your project is run smoothly, economically, and efficiently.



Superior USGS map base for your GIS

Most map-minded people are familiar with USGS topographic maps. National Geographic TOPO! for ArcGIS provides a detailed, trusted backdrop to your GIS

data using our seamless set of crisp, color-corrected, high resolution USGS quad map images stored in millions of colors. Because the data set is seamless, you can define the map extent you need without having to pull in extraneous quad maps. Edge-matching quads, file management, raster-reprojecting and map collar removal become tasks of the past!



Above: Project before TOPO! layer.

Right: Project with TOPO! layer.

Left: TOPO! and hillshade layers combined



Above: Project before TOPO! layer.



Right: Project with TOPO! Hillshade layer.

Introducing TOPO! Hillshade

TOPO! Hillshade adds dimension to your project, quickly enabling you to add and adjust grayscale hill shading to match your coverage area. Add realism to your map images, and produce presentation-quality graphics when you need them.

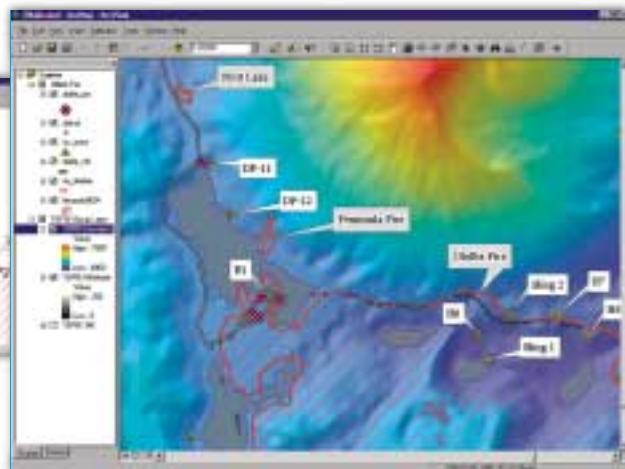
Introducing TOPO! Digital Elevation Models

TOPO! DEM gives you the option to add digital elevation data to your coverage area. Elevation data is essential to a wide range of GIS applications. TOPO! DEMs merge the highest resolution, best quality elevation data available from the USGS 1 arc second / 30 meter National Elevation data set into a seamless raster format. As a layer in ArcGIS this data can be used with a color ramp for creating natural background imagery, modeling landforms in three dimensions, slope and aspect analysis, and understanding drainage networks and watersheds.

Use TOPO! DEM by itself, or with either TOPO! Base Maps or TOPO! Hillshade for astonishing and accurate depictions that bring your project to life!



Above: Project before TOPO! layer.



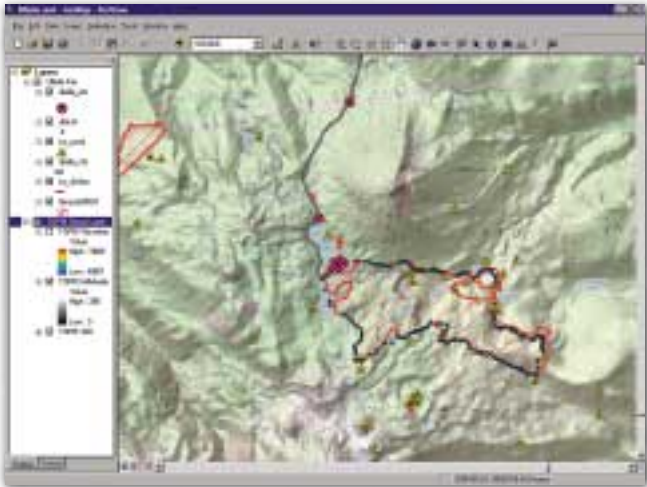
Right: Project with TOPO! DEM layer.



Combine TOPO! Base Maps with TOPO! Hillshade and TOPO! DEM for spectacular results!

A single source for quad maps, hill shade, and DEMs not only reduces costs but guarantees alignment between layers. Toggle layers on and off individually, adjust their

transparency levels, or apply a color ramp to create the exact base map you need.



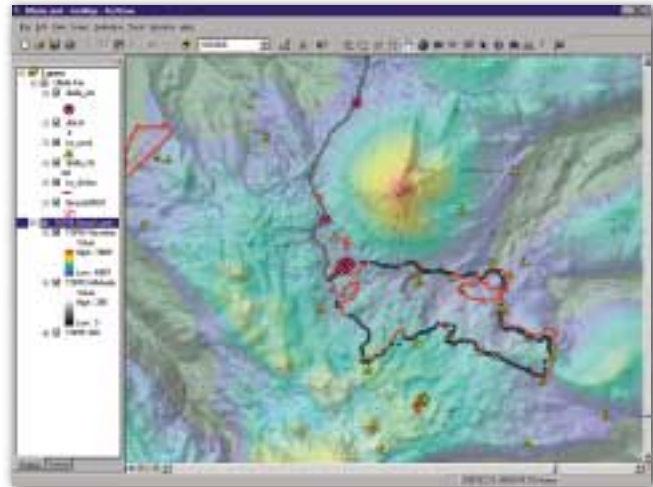
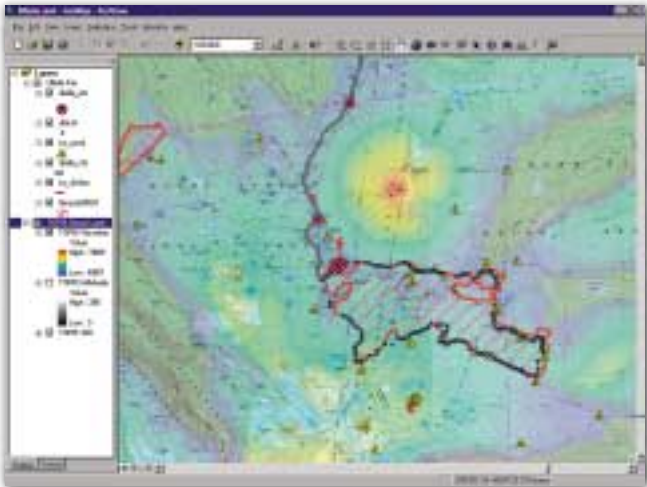
Above: TOPO! Base Map + Hillshade



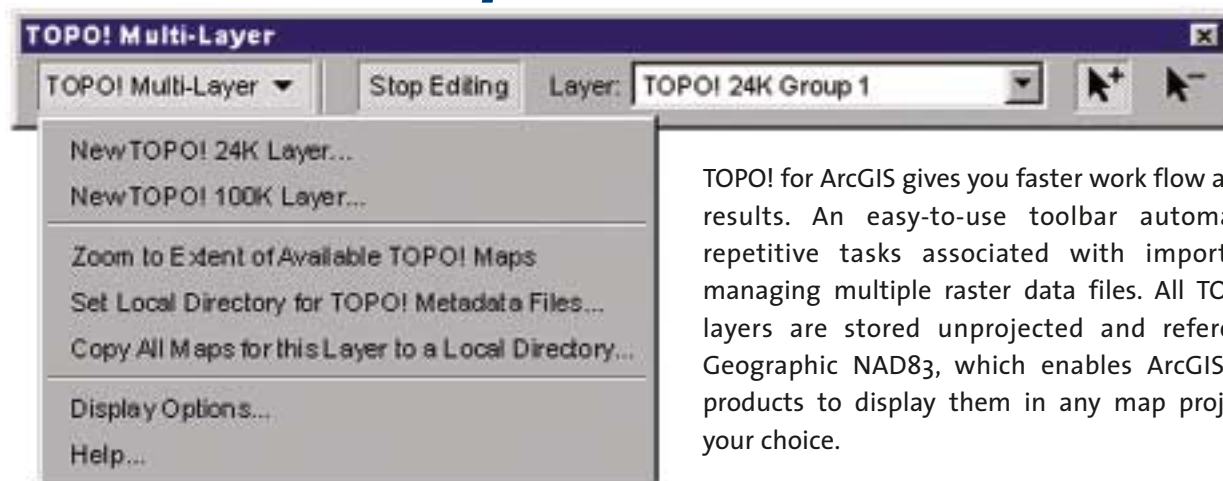
Above: TOPO! Hillshade + DEM

Below: TOPO! Base Map + DEM

Below: TOPO! Base Map + Hillshade + DEM



Tasks made simple



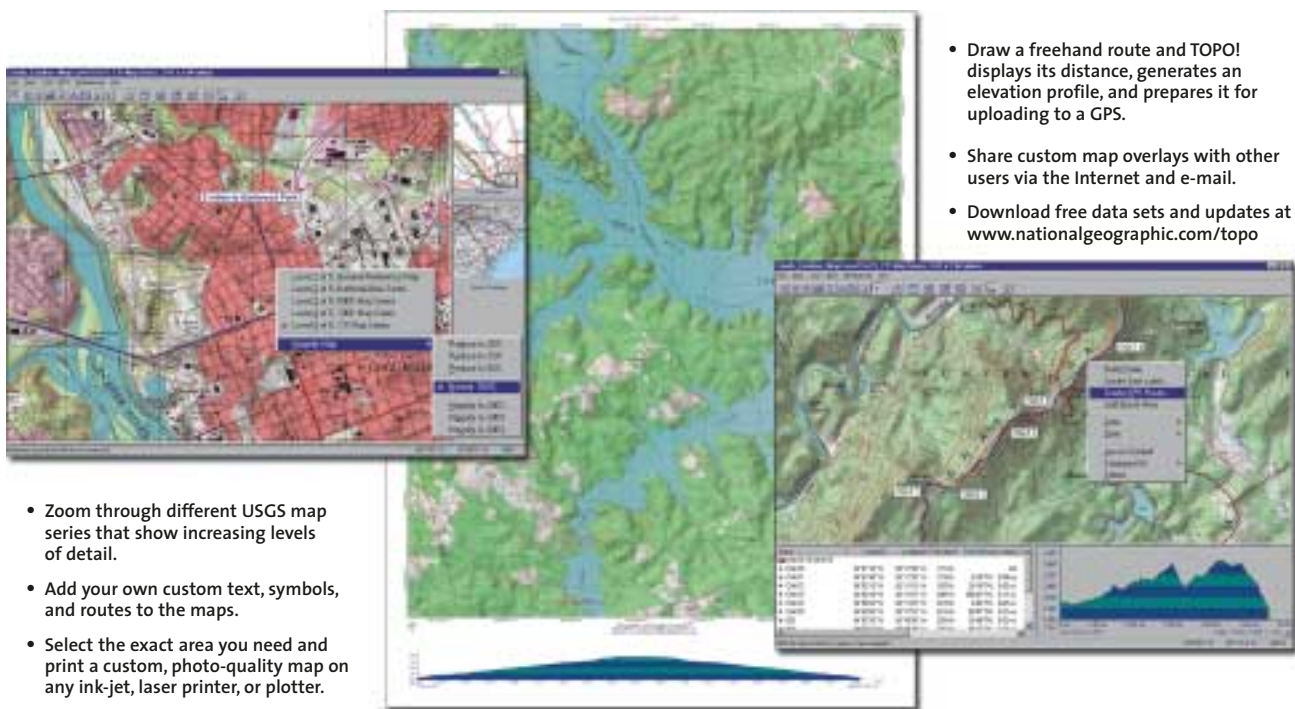
TOPO! for ArcGIS gives you faster work flow and better results. An easy-to-use toolbar automates the repetitive tasks associated with importing and managing multiple raster data files. All TOPO! data layers are stored unprojected and referenced to Geographic NAD83, which enables ArcGIS desktop products to display them in any map projection of your choice.



National Geographic TOPO! State Series CD-ROMs – Award winning software with every topographic map you'll ever need for all 50 states

National Geographic TOPO! is the best topographic software and data available anywhere, making it easy to create, print, and use the perfect map. Each state CD-ROM set includes all of the major series of USGS quad maps.

- Award winning TOPO! software
- Seamless statewide coverage
- Actual 1:24,000 scale maps
- Enhanced with 3-D digital shading
- Professional resolution—photo quality output
- **CD-ROMs are designed for use with the TOPO! for ArcGIS extension**



- Zoom through different USGS map series that show increasing levels of detail.
- Add your own custom text, symbols, and routes to the maps.
- Select the exact area you need and print a custom, photo-quality map on any ink-jet, laser printer, or plotter.

- Draw a freehand route and TOPO! displays its distance, generates an elevation profile, and prepares it for uploading to a GPS.
- Share custom map overlays with other users via the Internet and e-mail.
- Download free data sets and updates at www.nationalgeographic.com/topo

Own thousands of maps

- TOPO! provides scanned versions of the actual paper 1:24,000* scale USGS maps. Produced to the National Map Accuracy Standards, they are the most detailed maps available for outdoor enthusiasts, hobbyists, and professionals. *Alaska 1:63,360 and 24K where available
- Enhanced 3D digital shading emphasizes changes in elevation, making the maps more readable. Shading intensity can be adjusted for personal preference or toggled off for viewing the original USGS maps.
- Precise georeferencing ensures pixel-level accuracy for GPS and vector data overlay.
- True-color imaging uses millions of colors to optimize maps for viewing and printing.
- High resolution 30-meter digital elevation data provides the best elevation profiling.

Output maps in the format you need

- Select the exact area you want to print even if it is larger than the screen or covers multiple USGS quads.
- Add map border information to printouts, including UTM or latitude/longitude grids, scale bars, north arrows, and magnetic declination.
- Toggle between NAD 27 and WGS 84 datums in UTM or latitude/longitude.
- Export customized maps in a number of different raster file formats for use in other applications.
- Transfer your custom information directly to or from any leading GPS receiver using TOPO!'s GPS Wizard.

Use the best topographic map software

- Award-winning TOPO! mapping software provides a complete set of powerful, easy-to-use features.
- Navigate maps with ease and scroll seamlessly from map to map without borders.
- Access thousands of preloaded GPS waypoints (every labeled feature from thousands of USGS maps) with TOPO!'s Place Finder.
- Import GPS and vector data from a variety of sources, including GPS receivers, spreadsheets, and the web, to overlay on the maps.
- Use your PC to create and store thousands of waypoints, routes, and tracks. A built-in database lets you organize and sort all of your information.